

\$55,000 - 000 Nw Highway 441, Alachua

MLS® #375538

\$55,000

Bedroom, Bathroom,
Vacant Land on 0 Acres

Not In Subdivision, Alachua, FL

Great location! 441 frontage. Two lots side by side. Close to downtown Alachua. Located along 441 just 100 yards south of Alachua Elementary 1.5 miles from Interstate 75. Property zoned Commercial Intensive.



Essential Information

MLS® # 375538
Price \$55,000
Acres 0.29
Type Vacant Land
Sub-Type (COM)Commercial
Status ACTIVE

Community Information

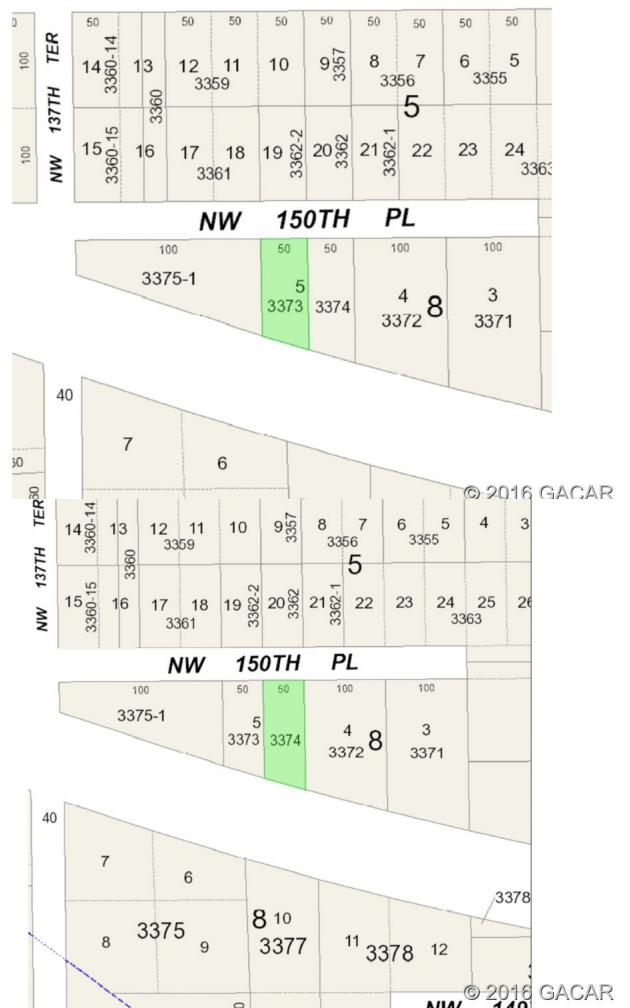
Address 000 Nw Highway 441
Subdivision Not In Subdivision
City Alachua
County Alachua
State FL
Zip Code 32615

Amenities

Amenities None
Utilities None
Waterfront None

School Information

Elementary Alachua (3-5)



Middle	Mebane, A.L. (6-8)
High	Santa Fe High School

Additional Information

Date Listed	June 13th, 2016
Days on Market	1304
HOA Fees	0.00

Listing Details

Listing Office	Boukari Realty, Inc.
----------------	----------------------

©2020 Gainesville Multiple Listing, Inc. All rights reserved. The information being provided by the Gainesville Multiple Listing, Inc. is exclusively for consumers' personal, non-commercial use, and it may not be used for any purpose other than to identify prospective properties consumers may be interested in purchasing. The data is deemed reliable but is not guaranteed accurate by the MLS.