

\$165,375 - Tbd D Nw County Road 239, Alachua

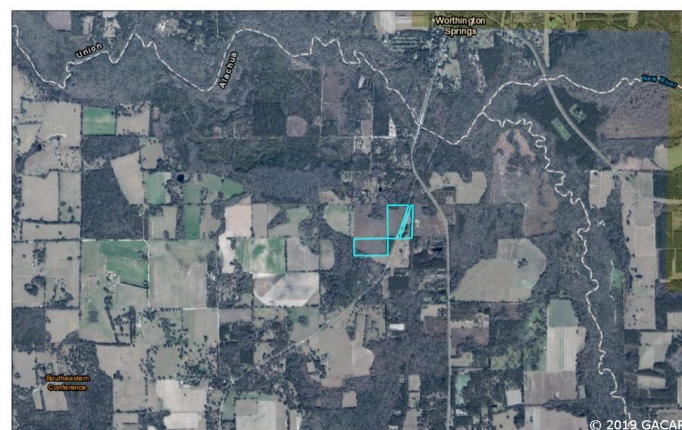
MLS® #428488

\$165,375

Bedroom, Bathroom,
Vacant Land on 37 Acres

Not In Subdivision, Alachua, FL

Versatile 44 acres MOL with approximately 7 acres a coastal hay field, some parts of property partially wooded with hardwoods and pine trees. With a few acres on north boundary heavily wooded and in a flood zone. This area draws in the Wildlife and makes it highly desirable. Located approximately a mile from the Santa Fe River on paved road CR 239. Just a few minutes from Worthington Springs. You can be on the River in minutes.



Essential Information

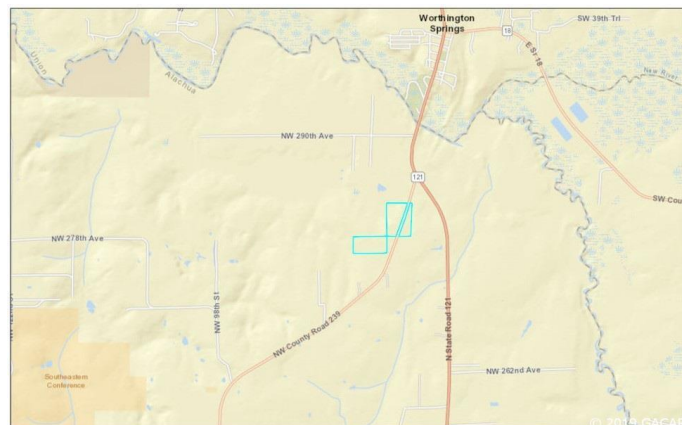
MLS® #	428488
Price	\$165,375
Acres	36.75
Type	Vacant Land
Sub-Type	(AGR)Agricultural
Status	ACTIVE

Community Information

Address	Tbd D Nw County Road 239
Subdivision	Not In Subdivision
City	Alachua
County	Alachua
State	FL
Zip Code	32615

Amenities

Utilities	None
-----------	------



School Information

Elementary	High Springs Comm. (K-8)
Middle	Mebane, A.L. (6-8)
High	Santa Fe High School

Additional Information

Date Listed	September 14th, 2019
Days on Market	83
HOA Fees	0.00

Listing Details

Listing Office	RE/MAX Professionals
----------------	----------------------

©2019 Gainesville Multiple Listing, Inc. All rights reserved. The information being provided by the Gainesville Multiple Listing, Inc. is exclusively for consumers' personal, non-commercial use, and it may not be used for any purpose other than to identify prospective properties consumers may be interested in purchasing. The data is deemed reliable but is not guaranteed accurate by the MLS.