

\$1,600,000 - 1202 Nw 39th Avenue, Gainesville

MLS® #437594

\$1,600,000

Bedroom, Bathroom,
Vacant Land on 2 Acres

Richland Heights, Gainesville, FL

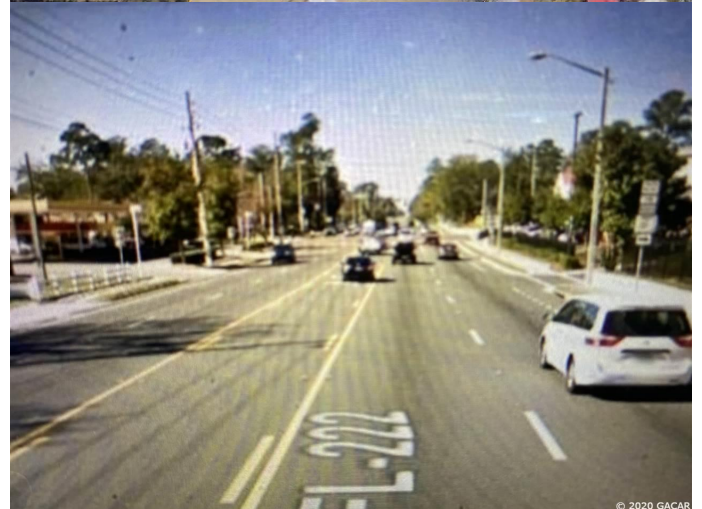
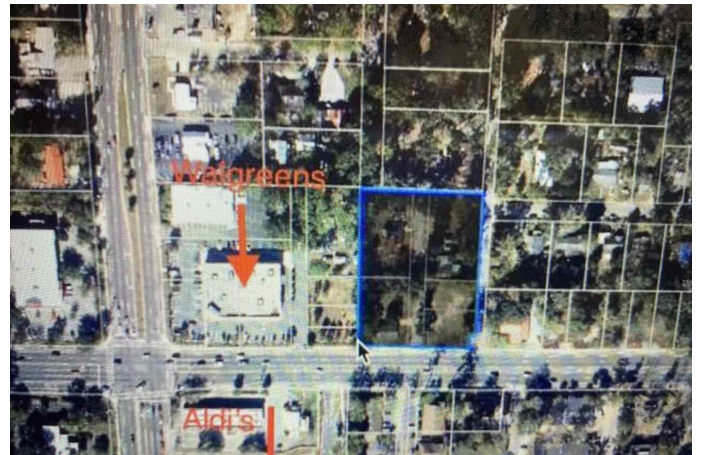
Location Location Location... Ready for Redevelopment! 2.8 Miles to UF and 4 miles to Gainesville Regional Airport. Gainesville where Nature and Culture meet. 5 Parcels 70,000 SF more or less, located just 345' off the very busy intersection of NW 39th Avenue and 13th Street. FDOT Daily traffic count for this intersection is 48500 vehicles. Great anchor properties at this location: Walgreens, CVS, SHELL, ALDI, Publix, Dunkin' Donuts, Jiffy Lube, Auto Zone and more. Parcel 08018-000-000 approved commercial zoning, 08015-000-000 zoned Office/Residential and 08014-000-000, 08016-000-000,08021-000-000 zoned RMF5.

Essential Information

MLS® #	437594
Price	\$1,600,000
Acres	2.00
Type	Vacant Land
Sub-Type	(OTH)Other
Status	ACTIVE

Community Information

Address	1202 Nw 39th Avenue
Subdivision	Richland Heights
City	Gainesville
County	Alachua
State	FL



© 2020 GACAR

Zip Code 32609

Amenities

Utilities Electric, Sewer, Underground Power

School Information

Elementary Foster, Stephen (K-5)

Middle Bishop, Howard W. (6-8)

High Gainesville High School

Additional Information

Date Listed August 28th, 2020

Days on Market 95

Zoning RMF-5

HOA Fees 0.00

Listing Details

Listing Office Florida Homes Realty & Mortgage

©2020 Gainesville Multiple Listing, Inc. All rights reserved. The information being provided by the Gainesville Multiple Listing, Inc. is exclusively for consumers' personal, non-commercial use, and it may not be used for any purpose other than to identify prospective properties consumers may be interested in purchasing. The data is deemed reliable but is not guaranteed accurate by the MLS.